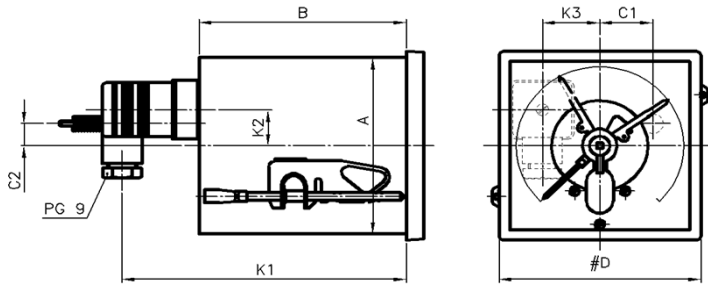


THERMOMETERS TYPE TPC WITH CONTACT

S

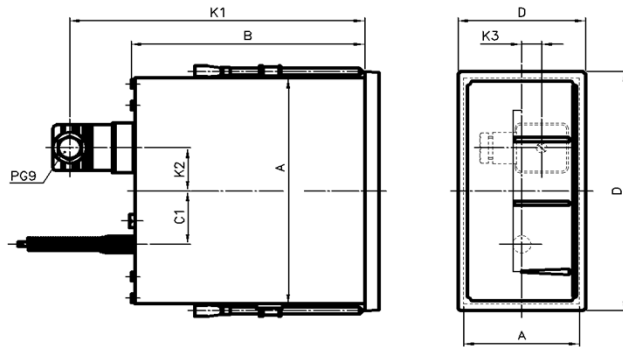
TPCxxxXS
Hirschman
cable
junction box



DIM.	CASE DIMENSIONS	
	96x96	144x144
A	90x90	138x138
B	99	136
C1	25	0
C2	11	0
D	96x96	144x144
K1	142	180
K2	18	16
K3	27	41

H / V

TPCxxxXH
TPCxxxXV
Hirschman
cable
junction box



DIM.	CASE DIMENSIONS	
	72x144	
A	66x136	
B	130	
C1	32	
D	72x144	
K1	173	
K2	26	
K3	11	

ADD-ON UNITS WITH ELECTRICAL CONTACTS FOR THERMOMETERS

ADD-ON UNIT (built on top of dial) with PG cable conduit and 1500 mm cable			
DIN16085/16196 TYPE	Switch function in clockwise direction	EXTRA COSTS	
		CASE DIMENSIONS (in mm)	
MAGNETIC ADD-ON CONTACT (=30W/-50VA), TYPE: M		Ø 100	Ø 160
M -1	contact closes		
M -2	contact opens		
M -3	single change-over contact (SPDT)		
M -11	1st contact closes, 2nd contact closes		
M -12	1st contact closes, 2nd contact opens		
M -21	1st contact opens, 2nd contact closes		
M -22	1st contact opens, 2nd contact opens		
M -xx+GS	double acting contact with separate circuits		
M -xxx	triple acting contact, 1=closes, 2=opens		
INDUCTIVE ADD-ON CONTACT (=8V, Ri=1 kohm, EEx ia IIC T6), TYPE: I		Ø 100	Ø 160
I -1	contact closes (operating current)		
I -2	contact opens		
I -x+SN	single contact with safety oscillator (SN)		
I -11	1st contact closes, 2nd contact closes		
I -12	1st contact closes, 2nd contact opens		
I -21	1st contact opens, 2nd contact closes		
I -22	1st contact opens, 2nd contact opens		
I -xx+SN	double contact with safety oscillator (SN)		

OPTIONS FOR ELECTRICAL CONTACTS

OPTIONS	DESCRIPTION	Ø 100	Ø 160	96 x 96	144 x 144	72 x 144
OIL FILLING	for HZ electrical contacts only			N.A.	N.A.	N.A.
CABLE	Cable connected to junction box for HZ electrical contacts	First 1500 mm:		per 1000 mm extr		
MSR-010	Protection relay for single acting contacts (supply 230Vac)					
MSR-020	Protection relay for double acting contacts (supply 230Vac)					
WE 77/Ex-1	Protection relay for single inductive contacts Eex ia ib IIC 230Vac					
WE 77/Ex-2	Protection relay for double inductive contacts Eex ia ib IIC 230 Vac					

INTERNATIONAL EXPLANATION OF CONTACT FUNCTIONS

CONTACT FUNCTIONS EXPLAINED WITH CLOCKWISE POINTER ROTATION

English						
STIKO contact	Magnetic	Inductive	Electrical	Translation:		
1				NO	HIGH	Normally open; makes on rise
2				NC	LOW	Normally closed, breaks on rise
Deutsch						
STIKO contact	Magnetspring	Induktiv	Elektronik	Übersetzung:		
1				NO		Schließer
2				NC		Öffner
Français						
STIKO contact	Magnétique	Inductive	Électronique	Traduction:		
1				FM	MAXI	Fermeture a maxima
2				OM	MINI	Ouverture a maxima
Italiano						
STIKO contact	Magnetico	Induttivo	Elettrico	Traduzione		
1				NA		Normalmente aperto
2				NC		Normalmente chiuso
Español						
STIKO contact	Magnético	Inductivo	Eléctrico	Traducción		
1				NA		Normalmente abierto
2				NC		Normalmente cerrado